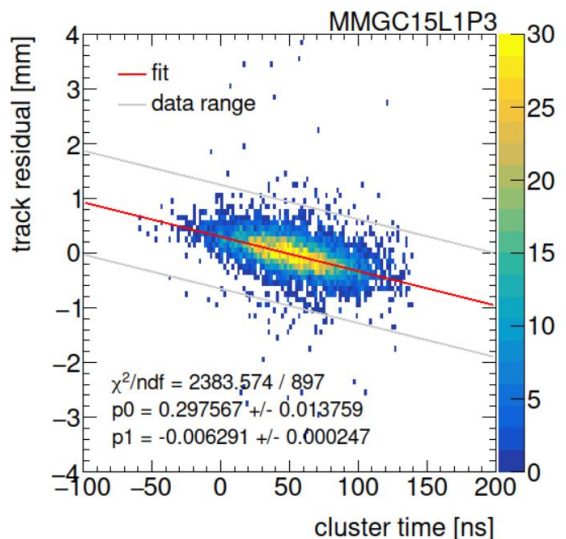


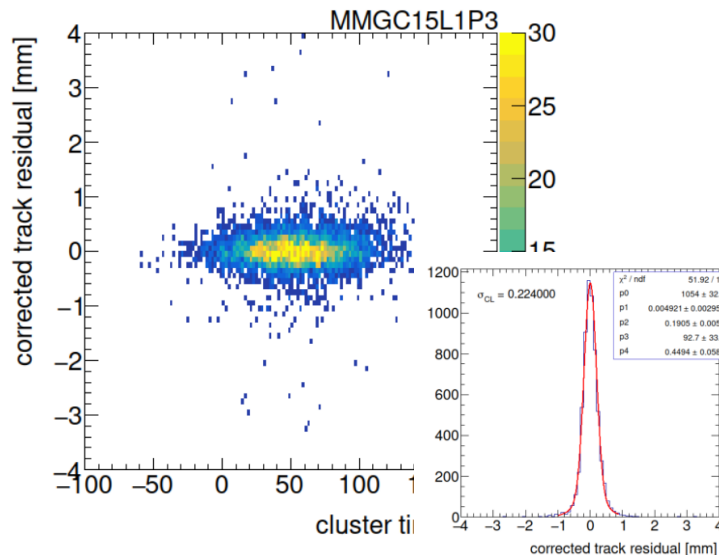
Status of angle dependent resolution corrections

NSWCommonplotter:

```
python3 runOnCondor.py --inputfiles paths_group.det-  
muon.data24_13p6TeV.00474572.physics_Main.merge.NTUP_NSW.f1462_m2250_Jul2024MuTestRep_EXT0.conf --inputfolder  
inputFileLists/2024_reprocessing/ --jobName testRalf_reprocessing --queue testmatch
```



Correct for the slope



Consider angle dependence of p_1

