
WEEKLY HARDWARE MEETING

ESHITA KUMAR

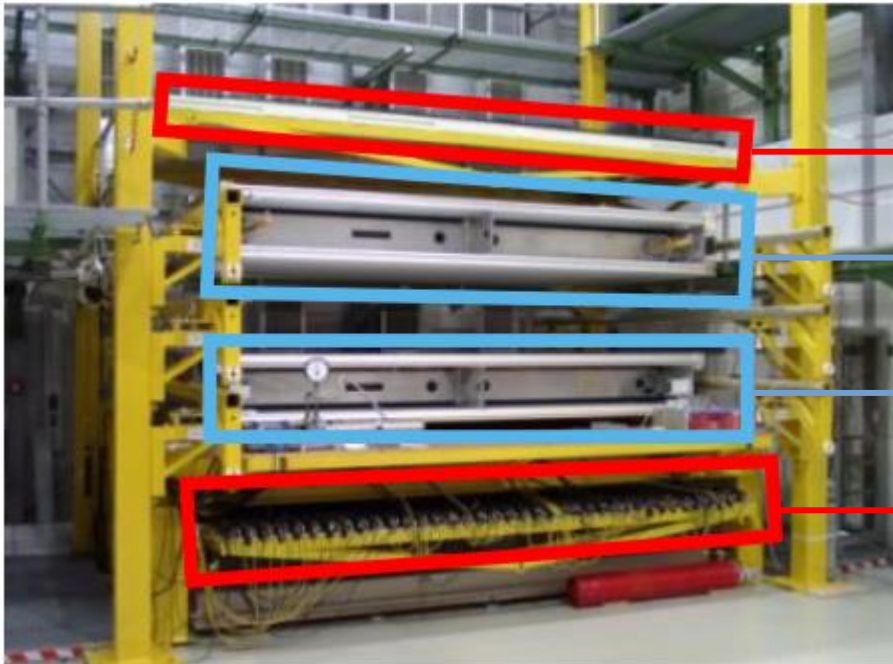
13TH NOVEMBER, 2024



LMU

LUDWIG-
MAXIMILIANS-
UNIVERSITÄT
MÜNCHEN

Cosmic Ray Facility



Scintillators

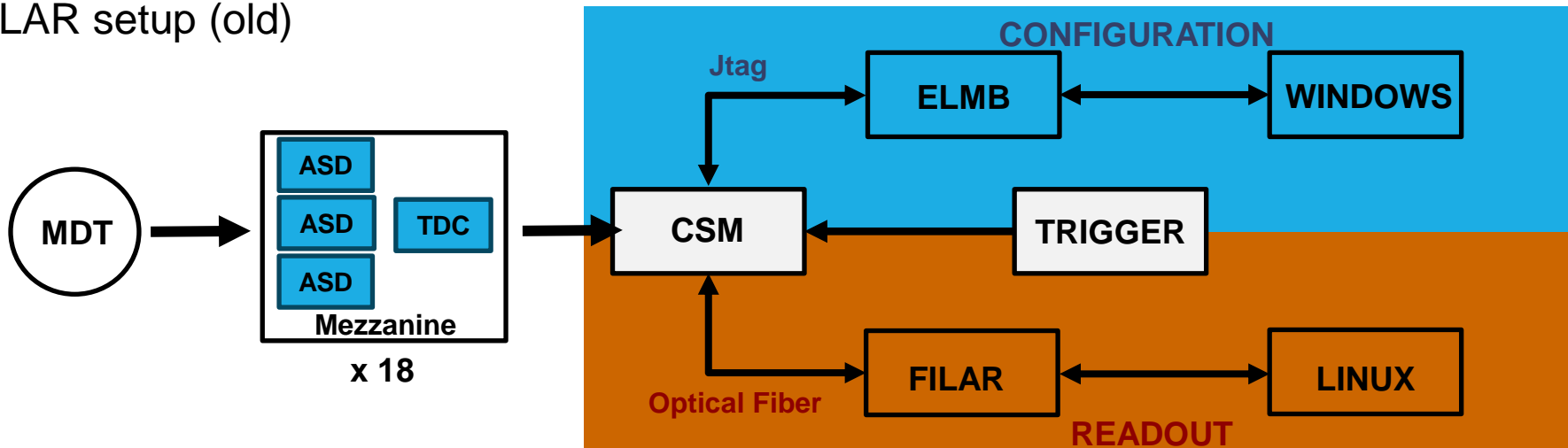
MDT chamber 1

MDT chamber 2

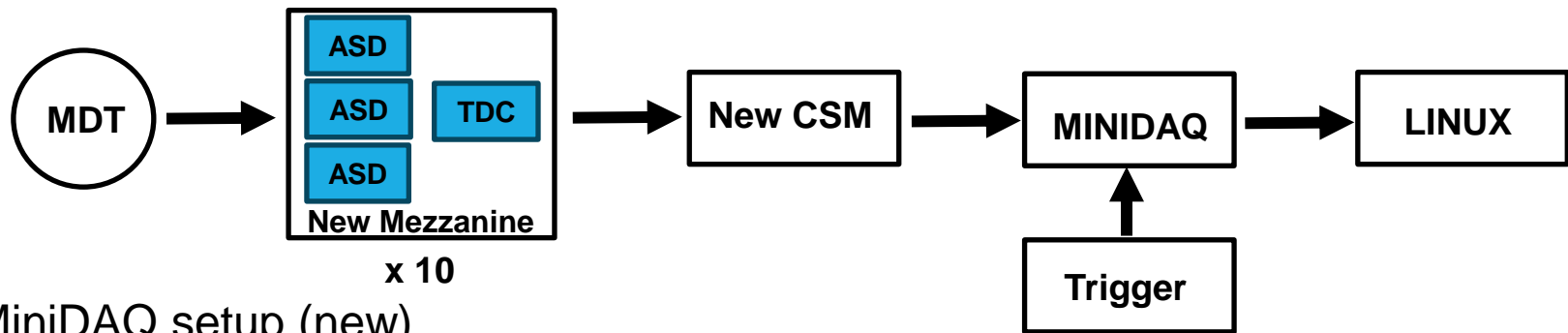
Scintillators

CRF Electronics Setup

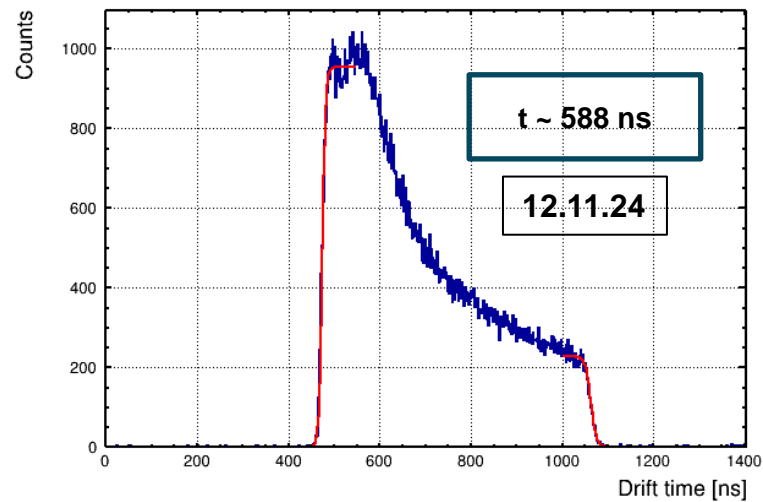
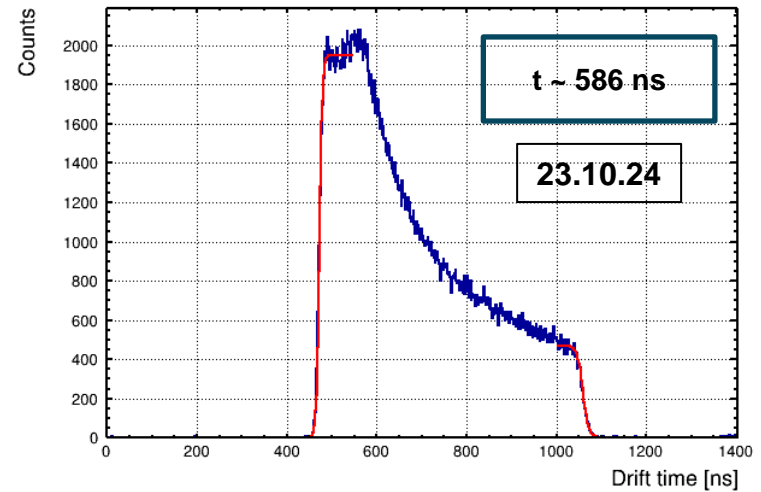
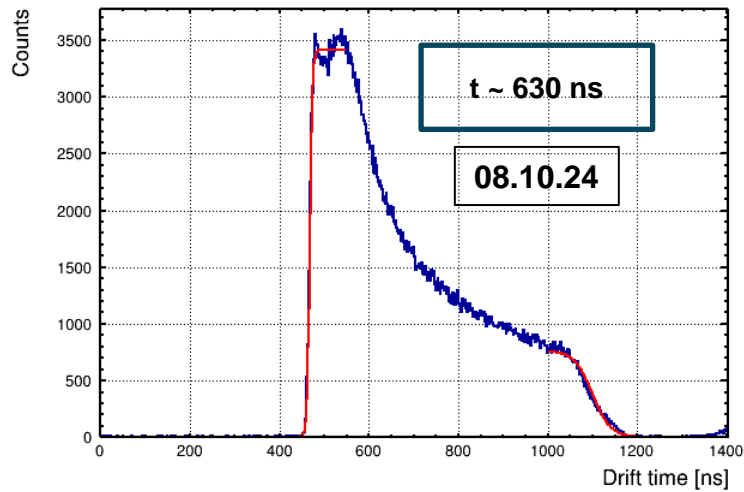
FILAR setup (old)



MiniDAQ setup (new)

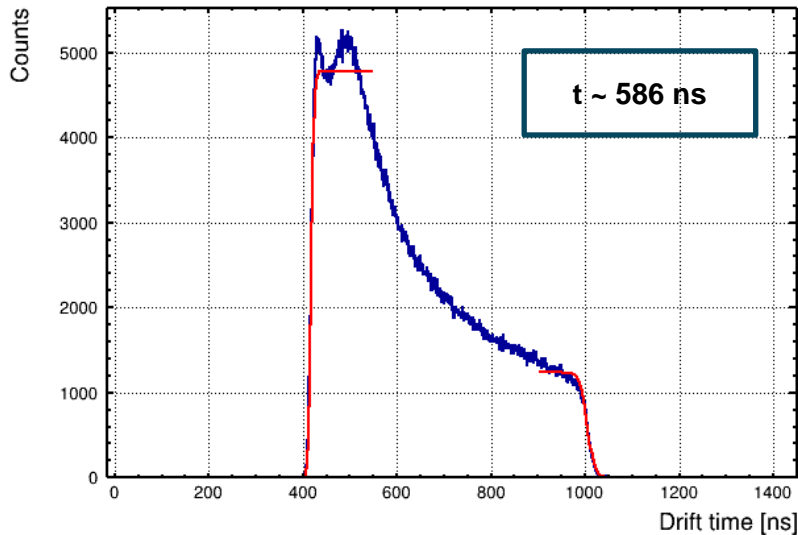


Fitted Drift-time plots: MiniDAQ

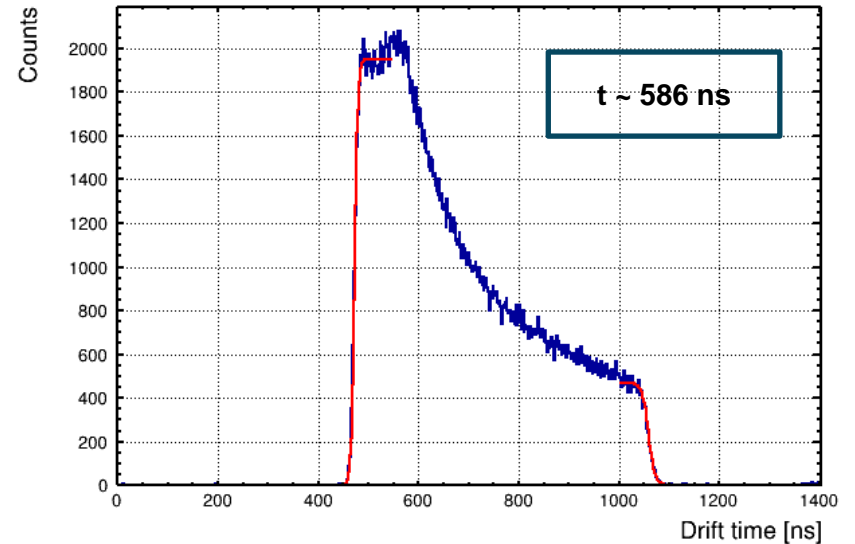


TDC plots Comparison

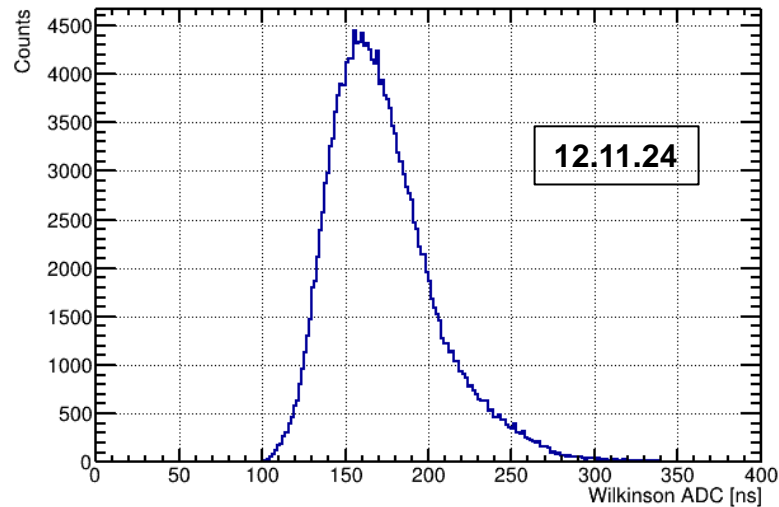
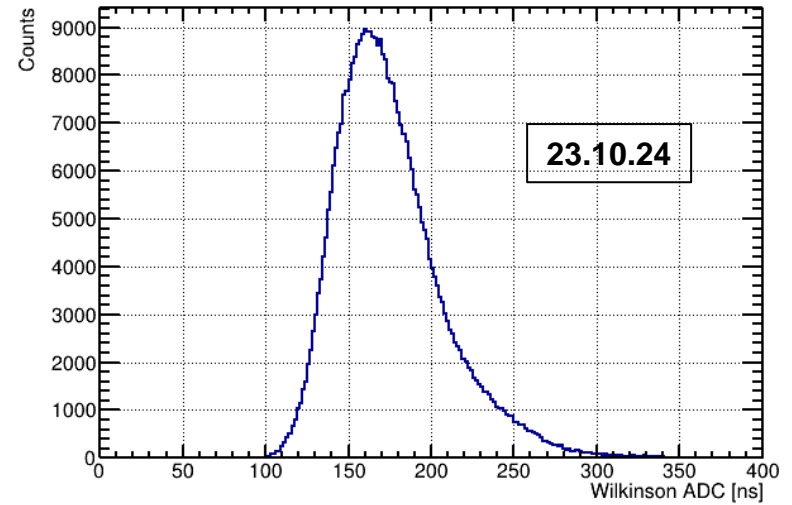
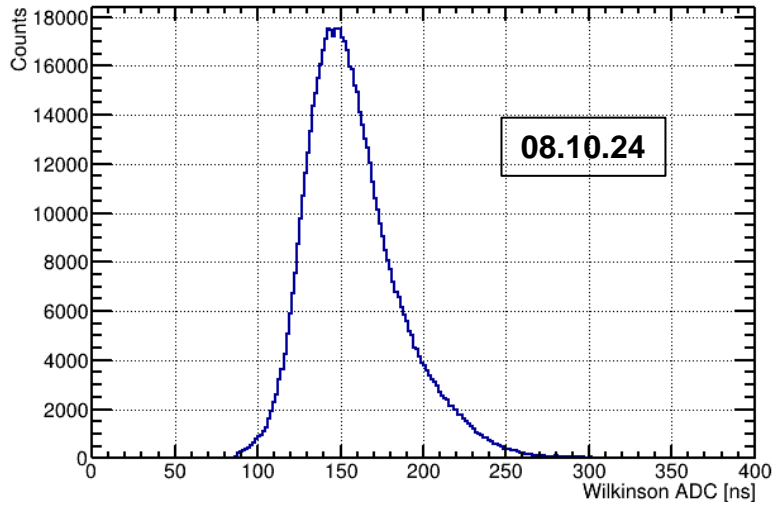
FILAR (1 multilayer)



MINIDAQ (6 mezz., 1 multilayer)

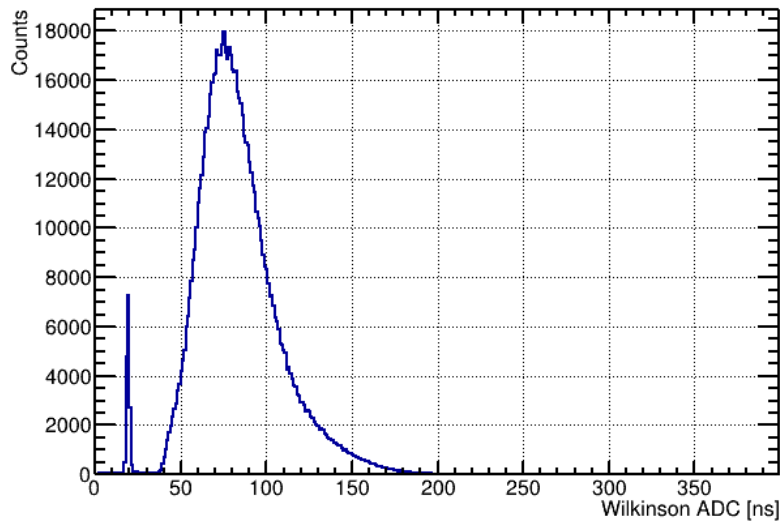


ADC plots - MiniDAQ

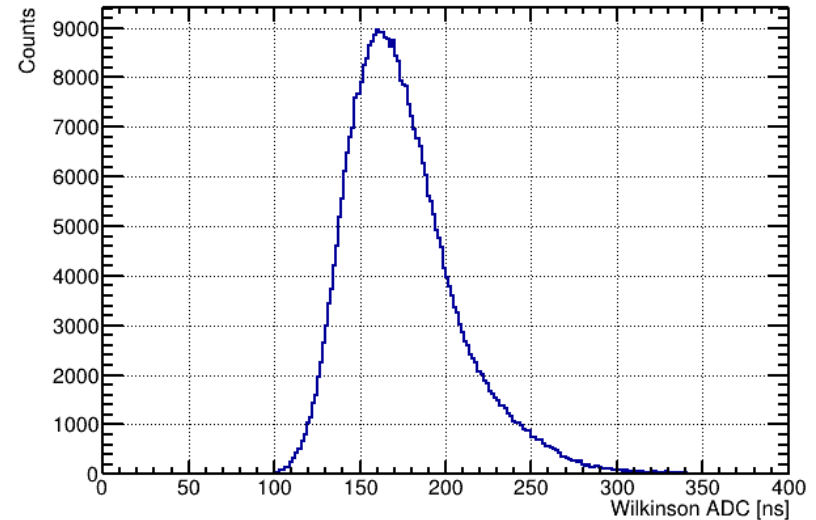


ADC plots Comparison

FILAR (1 multilayer)

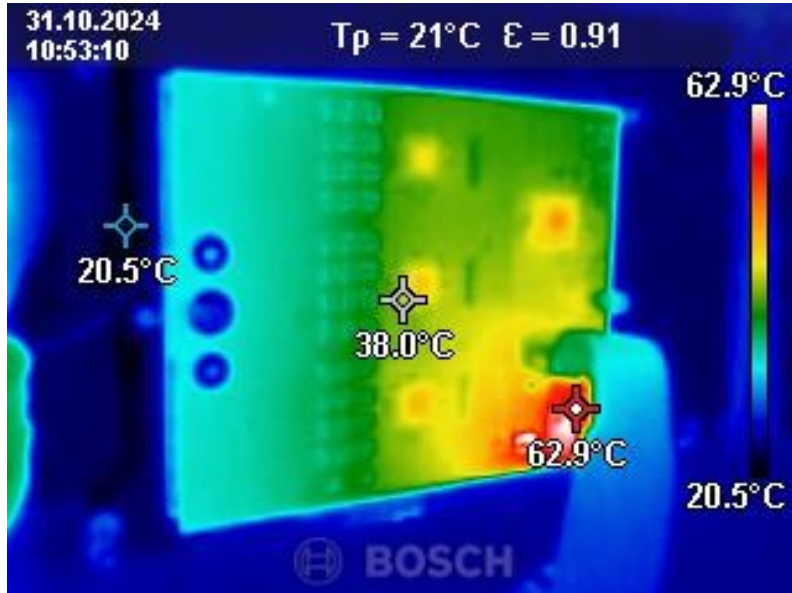


MINIDAQ (6 mezz., 1 multilayer)



- ADC Threshold: -38 mV (108 mV)
- Wilkinson Gate Width: 14 ns
- Rundown current: 4.5 μ A
- Hysteresis: 8.75 mV

Temperature Readings

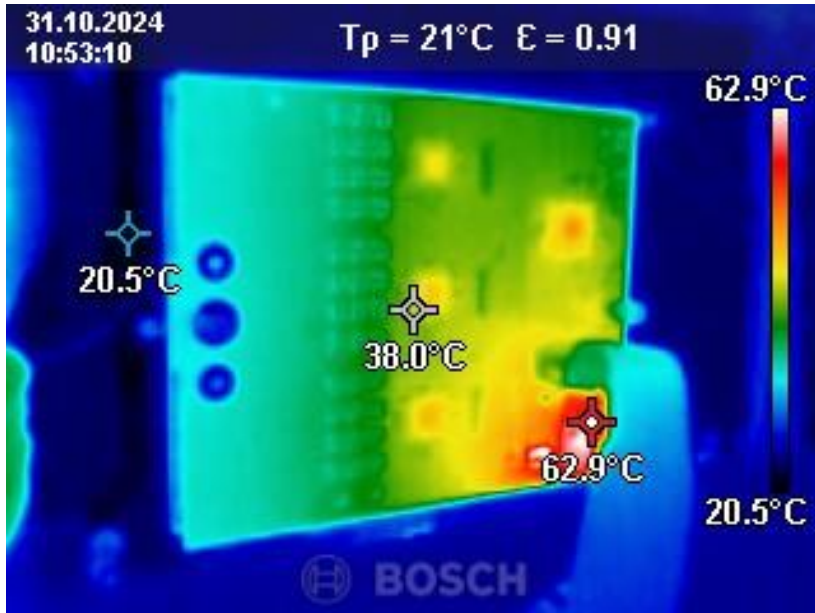


New mezz. in operation (IR)

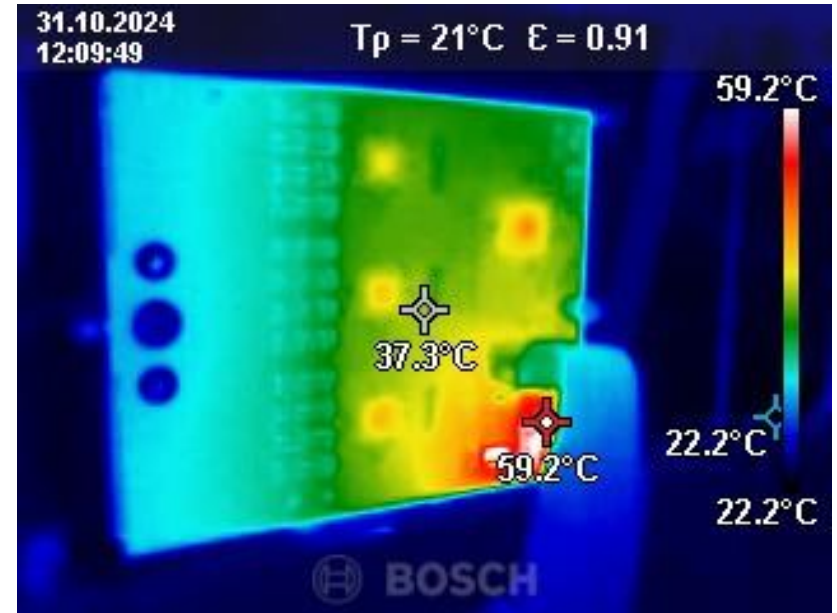


New mezz. in operation (Optical)

Temperature Readings

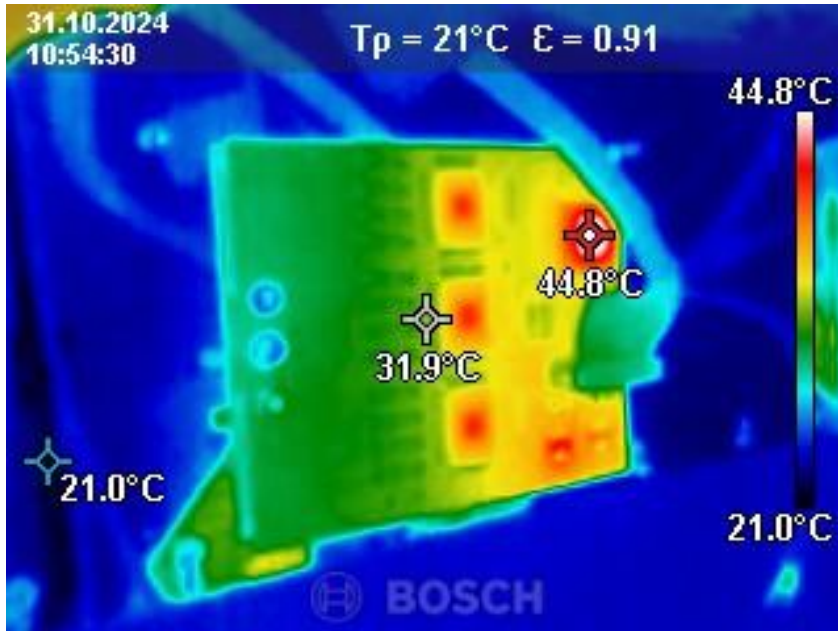


New mezz. in operation

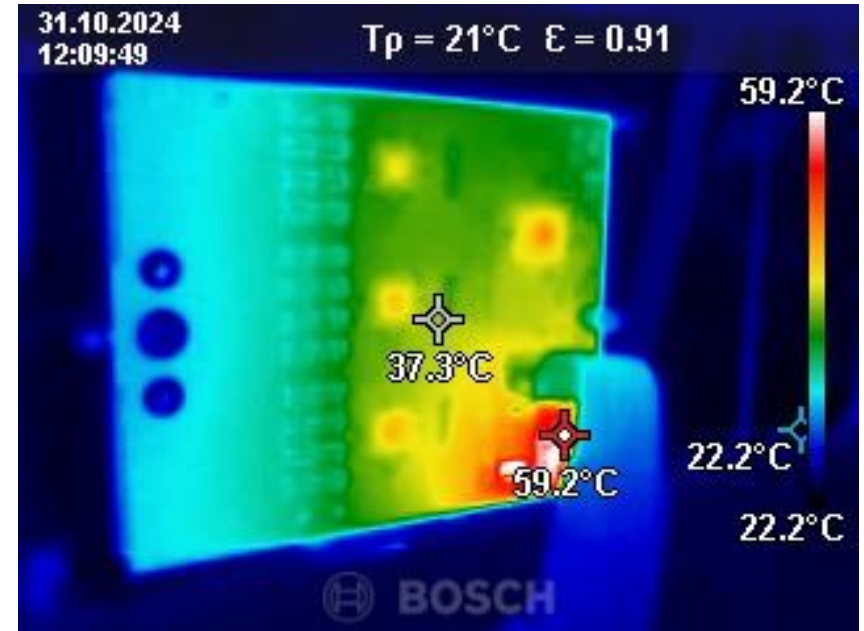


New mezz. not running

Temperature Readings



Old mezz. not running



New mezz. not running

Backup

